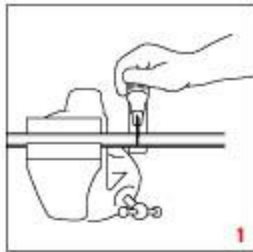
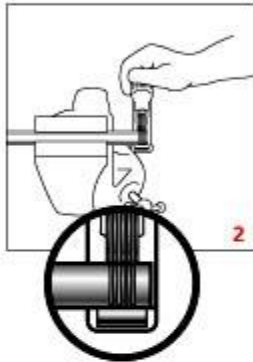




Tube-Mate Auto-Fit™ Hose Ends with Perform-O-Flex™ or Auto-Flex™ Assembly Instruction

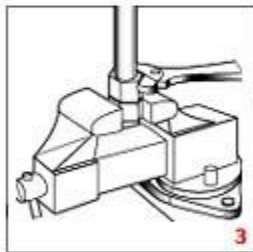


1. Assemble the tube-mate end onto the hose onto the hose per Auto-Fit hose and instructions.



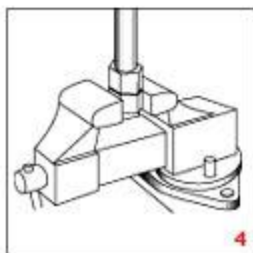
2. Cut and de-burr the tubing. The cut must be square.

3. Using the Tube-Mate grooving tool, groove the tubing. The tubing may also be beaded (or barbed). See Earl's new tube beading tool.



4. Push the tubing into the correct size Tube-Mate until it bottoms.

5. Tighten the Tube-Mate nut.



6. Blow the assembly clean and pressure test before running the car.

NOTE: Tube-Mate hose ends are designed to be used only with beaded, barbed or grooved rigid tubing at no more than 25 psi working pressure.



Pressure Test All Hose Assemblies Before Installation!