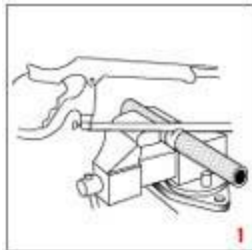




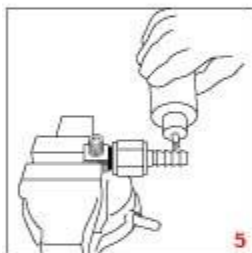
Auto-Crimp™ Hose Ends with Perform-O-Flex™ or Auto-Flex™ Assembly Instruction



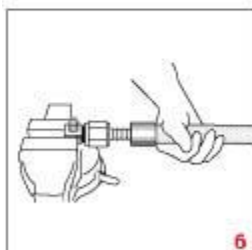
1. Cut the hose square with a radiac wheel or a fine tooth hacksaw. It is necessary to wrap the hose tightly with masking or electrical tape and to cut through the tape. This helps to prevent the stainless braid from fraying.



2. Trim any frayed ends of the braid with sharp snips or diagonal cutters and remove the tape.



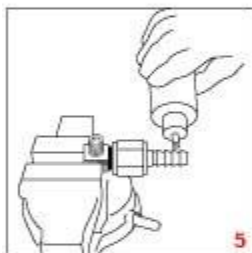
3. Slip the Auto-Crimp collar over the end of the hose.



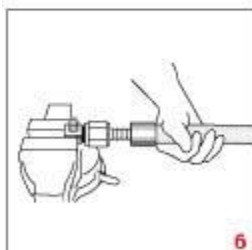
4. Lubricate the inside of the hose and the outside of the Auto-Mate nipple.



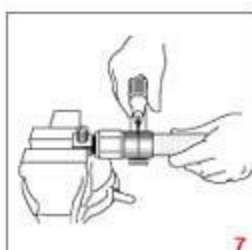
5. Place a suitable adapter fitting in a vise. Screw the Auto-Mate hose end onto the adapter and tighten.



6. Push the Auto-Mate hose end into the hose until it bottoms against the collar.



7. Place the Auto-Crimp tool approximately in the center of the collar. Tighten the roller until it contacts the collar. Alternately turning the handle and tightening the roller, crimp the collar until its diameter has been reduced sufficiently to show the hose end barbs as ridges in the collar.



8. Blow the assembly clean and pressure test before running the car.



Pressure Test All Hose Assemblies Before Installation!